



EDUCATION

University of Salford
BA (hons) Design Practice
Spatial Design, 1994-97

CURRENT EMPLOYMENT

HOK International Ltd
Qube
90 Whitfield St
London W1T 4EZ

PREVIOUS EMPLOYMENT

31 Central Street
Clerkenwell
Islington
London EC1V 8AB

AWARDS

SJ Berwin, Citation of Excellence, Business Week & Architectural Record Magazine Awards 2007

Lighting Design Awards (2009)
Commended – Special Projects , Cisco Systems HQ EBC

PUBLICATIONS

e-architect - Hachette
adf - architects data file
building construction design
Property magazine international
reFURB hachette
reFURB davies st
“Legal niceties ” Reynolds Porter Chamberlain (Month/Year)
“On Office ,” Michael Willoughby (Feb 2007)

SKILLS

Advanced knowledge of:

Revit
AutoCAD
Sketchup
Microsoft Office
Word
Powerpoint
Excel
Adobe
Photoshop

TIM HATTON

Senior Interior Designer

Tim joined HOK in 2000 and has over 15 years experience in corporate workplace design. He is a talented innovative yet pragmatic designer, who has been a key team member on many high profile large corporate, commercial and public sector projects. His creative design skills are complimented by his excellent technical knowledge. Tim has led the design and implementation for many corporate client projects.

In the last 12 months Tim has been responsible for the design development, documentation and site liaison for the several large refurbishment and fit outs. Notably BBC Worldwide at television Centre and Hachette UK at Embankment, both utilising Activity Based Working principles. His calm manner and terrier-like diligence has proved to be a winning combination with the client and contractor alike.

His knowledge of Interior workplace, space standards and strong design flair will make him a key member for your project.

EXPERIENCE

Hachette UK

London, UK - 100,000 sqft

The co-location of 7 publishing brands to a single location, The previous traditional hierarchical driven space was flattened to create an open plan environment, with centralised collaboration areas.

BBC Worldwide HQ

London, UK - 100,000 sqft

TVC Stage 6 is the new long-term home for BBC Worldwide. HOK are providing architectural and interior design solutions for an innovative environment that will facilitate a completely new way of working.

🌿 **SKA GOLD** accredited

Davies St

London, UK - 1200 sqft

A unique and understated design with real attention to detail was key to creating this space and paramount for designing a small area requiring maximum impact. The project approach was to provide a new benchmark in exclusive reception design for Mayfair.

🌿 **BREEAM®** Very Good

Zurich Financial Services

Global

Working closely with the CRE team to undertake pilot studies and develop global design standards in various locations including Madrid, Paris, Zurich and Whitely

BBC, W12 Strategy

London, UK

A feasibility study for BBC's Corporate Real Estate Strategy, involving frequent engagement with the end users. This study has led to further project work with the BBC W12 team.

News International

London, UK - 160,000 sqft.

Detail design through to the completion for the fit out of 10 floors of 3 Thomas More Sq.

Deutsche Bank

London, UK - 55,000 sqft.

Concept, detail design through to completion for the refurbishment of four floors to one of Deutsche Banks London sites.

🌿 **LEED GOLD** accredited

Deutsche Bank

Birmingham, UK - 38,000 sqft.

Fitted out to Deutsche Bank's corporate design standards. Local historic architectural landmarks were used to inspire the design and were manifested in the glazing elements. Throughout the project the design aligned with the Client's design guidelines.

🌿 **LEED SILVER** accredited

Southend Pier

Southend, UK

Short listed for a competition to redevelop the world's longest pleasure pier. The design was to reinvigorate the pier and return it once more into a major attraction for both tourists and residents.

Simmons & Simmons

London, UK - 15,000 sqft.

Detail design development through to completion for the refurbishment of the client facing areas to conference and dining rooms.

HSBC

Hayward's Heath, Bournemouth, UK (15,000 sqft. Each)

Working closely with the client and end users to develop interior design solutions which adhered to HSBC's corporate standards yet demonstrated local relevance.

HSBC

Park Street, London, UK - 150,000 sqft.

Detail design development through to completion for the refurbishment of HSBC's contingency site for their HQ at 8 Canada Square.

Cisco EBC (European Briefing Centre) & Reception

Bedfont Lakes, UK - 15,000 sqft

Concept, detail design through to completion for the refurbishment of their Executive Briefing Centre for this international Technology Company.

Cisco TCMO & HR Department

Bedfont Lakes, UK - 25,000 sqft

Concept, detail design through to completion of a unique mobile workplace created on the 1st floor of Building 9 at Bedfont Lakes.

AEMS Atos Euronext Market Solutions

London, UK - 28,000 sqft.

Detail design development through to completion of new office fit out in Canary Wharf for this leading global provider of IT solutions for exchanges.

RPC Reynolds Porter Chamberlain

London, UK - 90,000 sqft

Development of concept through to detail design and completion of new office building on Tower Bridge Road enabling the consolidation of two existing office locations into one.

🌿 **BREEAM®** Very Good

SJ Berwin

London, UK - 200,000 sqft.

Extensive shell and core enhancements, Cat A & B office fit out of this top 20 law firm's new riverside offices including a 25,000 sqft roof terrace. Business Week and Architectural Record Magazines Awards
2007 - Citation of Excellence Short listed for BCO Design Awards.

🌿 **BREEAM®** Very Good

Hawker Barracks

Woodbridge, UK - 60 hectare

Re-development of military airfield barracks utilising existing buildings and providing new mess and work areas.

Exxon Mobil, HQ New Production Office

Sakhalin Island, Russia - 9000 sqm.

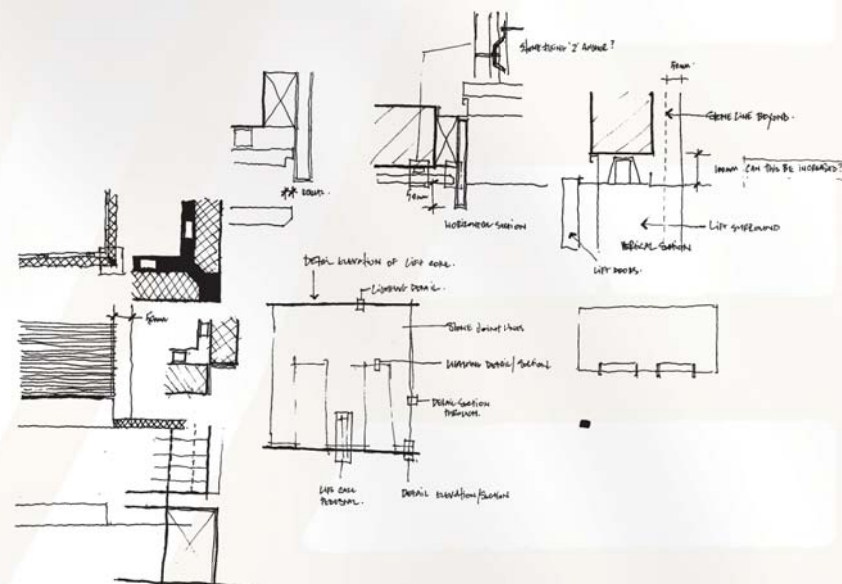
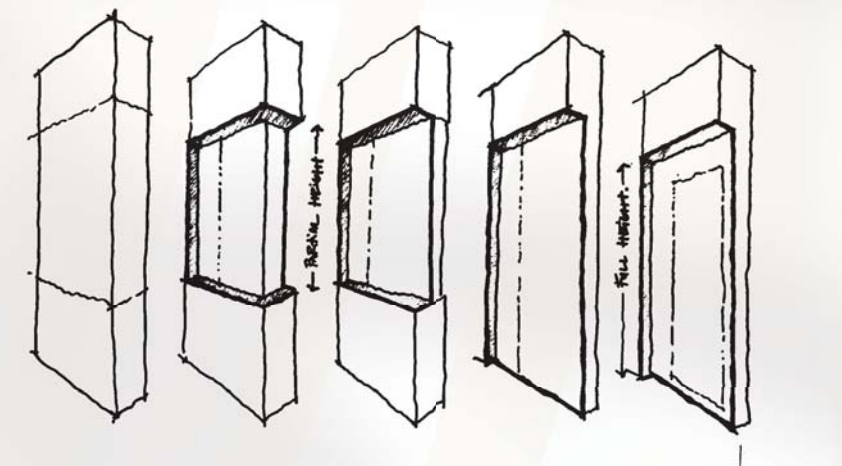
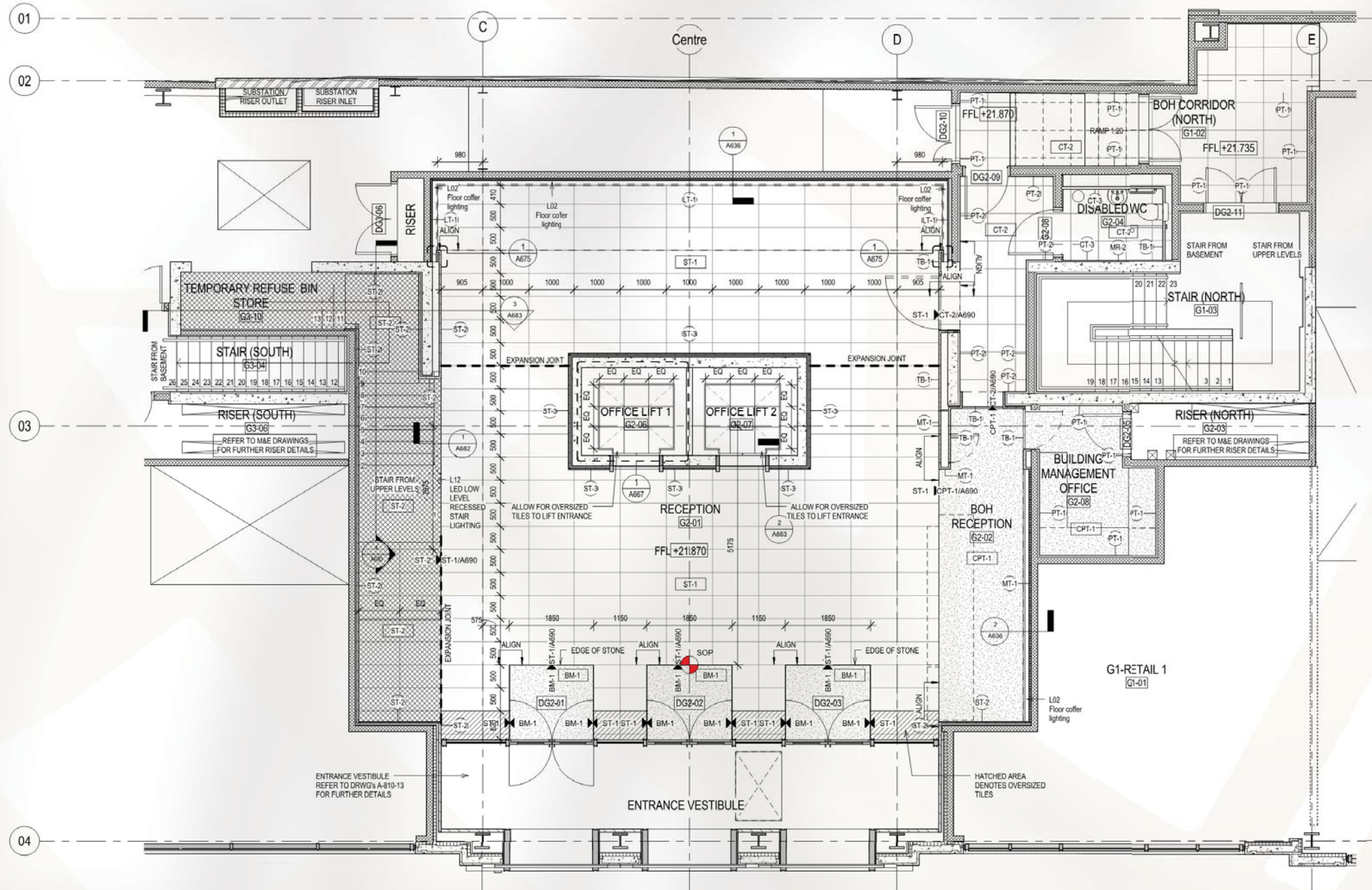
The ExxonNeftegas Limited (ENL) New Production Office, an urban master planned complex incorporating a HQ office building, a covered parking, surface visitor parking and landscaped parkland.

Exxon Mobil, Residential Complex

Sakhalin Island, Russia - 76 hectares.

The ExxonNeftegas Limited (ENL) Residential Complex, planned new development of 200 duplex town houses, community centre and recreational facilities.

🌿 **LEED Certified**



1 GROUND FLOOR PLAN - INTERIOR DETAILS - RECEPTION FINISHES
1:50

RECEPTION ENTRANCE

